


# Pupils enrolled at public music schools, by subject

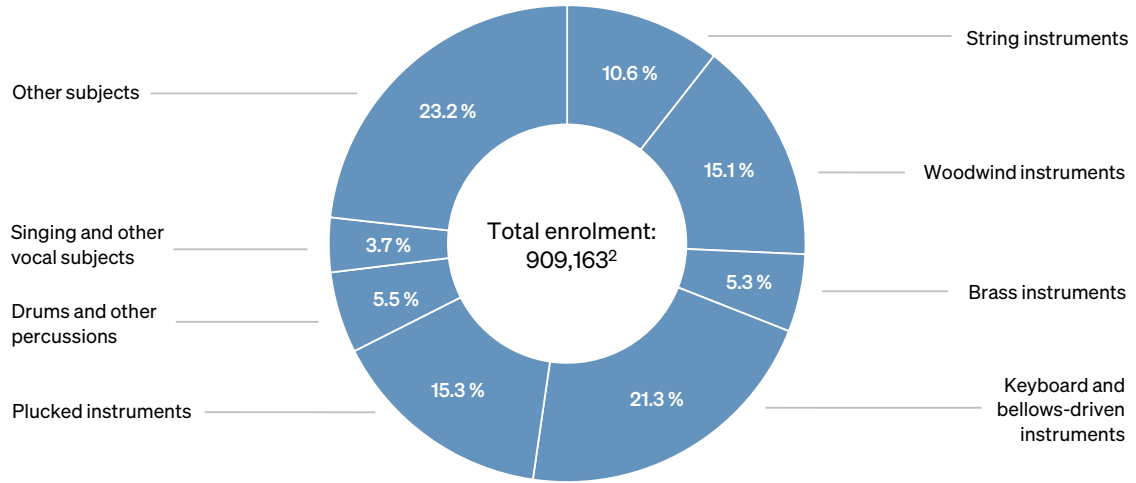
**Source:** Association of German Music Schools (VdM)

**Data:** 2000 to 2022

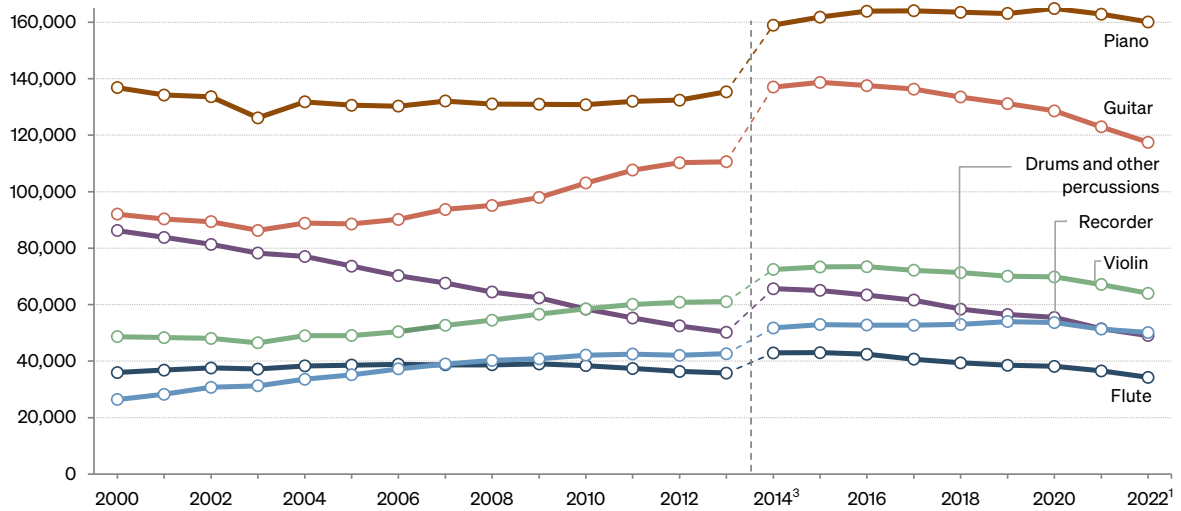
 <https://miz.org/en/statistics/pupils-enrolled-at-public-music-schools-by-subject>

# Statistics

**Percentage of pupils by instrument or voice (VdM report 2022 referring to 2021)<sup>1</sup>**



**Number of pupils for most frequently chosen instruments**



## Pupils enrolled at public music schools, by subject

Subject	Year (Number of music schools*)	2000 (980)		2013 (929)		Change from 2000 to 2013 %	2014 <sup>3</sup> (930)		2020 (933)		Change from 2014 to 2020 %	2022 <sup>1</sup> (934)		Change from 2020 to 2022 %
		total	%	total	%		total	%	total	%		total	%	
String instruments	Violin	48,678	7.8	61,092	7.9	+25.5	72,463	7.6	69,811	6.9	-3.7	64,011	7.0	-8.3
	Viola	2,024	0.3	2,906	0.4	+43.6	3,556	0.4	4,290	0.4	+20.6	4,066	0.4	-5.2
	Violoncello	12,396	2.0	18,579	2.4	+49.9	22,119	2.3	24,306	2.4	+9.9	23,203	2.6	-4.5
	Double bass	1,320	0.2	2,735	0.4	+107.2	3,365	0.4	4,138	0.4	+23.0	3,750	0.4	-9.4
	Other string instruments	428	0.1	1,046	0.1	+144.4	1,376	0.1	1,386	0.1	+0.7	1,036	0.1	-25.3
Woodwind instruments	Recorder	86,223	13.9	50,215	6.5	-41.8	65,651	6.9	55,485	5.5	-15.5	49,042	5.4	-11.6
	Flute	35,982	5.8	35,754	4.6	-0.6	42,915	4.5	38,153	3.8	-11.1	34,254	3.8	-10.2
	Oboe	2,865	0.5	3,173	0.4	+10.8	3,754	0.4	3,816	0.4	+1.7	3,376	0.4	-11.5
	Bassoon	1,405	0.2	2,231	0.3	+58.8	2,581	0.3	2,633	0.3	+2.0	2,355	0.3	-10.6
	Clarinet	22,905	3.7	24,488	3.2	+6.9	28,326	3.0	26,543	2.6	-6.3	23,842	2.6	-10.2
	Saxophone	17,756	2.9	21,759	2.8	+22.5	26,297	2.8	26,298	2.6	+0.0	23,948	2.6	-8.9
	Other woodwind instruments	435	0.1	611	0.1	+40.5	1,065	0.1	1,068	0.1	+0.3	856	0.1	-19.9
Brass instruments	Horn	3,393	0.6	4,711	0.6	+38.8	5,845	0.6	6,599	0.7	+12.9	6,078	0.7	-7.9
	Trumpet	20,962	3.4	22,407	2.9	+6.9	27,120	2.8	27,584	2.7	+1.7	25,320	2.8	-8.2
	Trombone	4,531	0.7	7,209	0.9	+59.1	8,847	0.9	10,142	1.0	+14.6	9,383	1.0	-7.5
	Tenor horn <sup>5</sup>	1,805	0.3	2,173	0.3	+20.4	3,459	0.4	4,170	0.4	+20.6	4,047	0.4	-2.9
	Other brass instruments	1,376	0.2	2,955	0.4	+114.8	3,484	0.4	3,439	0.3	-1.3	3,086	0.3	-10.3
Keyboard & bellows-driven	Piano	136,863	22.0	135,400	17.5	-1.1	159,003	16.7	164,876	16.4	+3.7	160,132	17.6	-2.9
	Accordion	17,263	2.8	11,370	1.5	-34.1	12,953	1.4	12,009	1.2	-7.3	10,687	1.2	-11.0
	Keyboard and electric organ	44,111	7.1	24,901	3.2	-43.5	30,317	3.2	23,998	2.4	-20.8	21,204	2.3	-11.6
	Other keyboard & bellows-driven instr.	2,440	0.4	2,333	0.3	-4.4	2,356	0.2	1,807	0.2	-23.3	1,804	0.2	-0.2
Plucked instruments	Guitar	92,066	14.8	110,597	14.3	+20.1	137,037	14.4	128,638	12.8	-6.1	117,509	12.9	-8.7
	Harp	1,434	0.2	2,588	0.3	+80.5	3,178	0.3	4,367	0.4	+37.4	4,244	0.5	-2.8
	Bağlama / arabic lute / saz	-	-	-	-	-	1,218	0.1	1,308	0.1	+7.4	1,085	0.1	-17.0
	Electric guitar	7,390	1.2	13,015	1.7	+76.1	15,617	1.6	9,769	1.0	-37.4	8,748	1.0	-10.5
	Electric bass	1,893	0.3	3,191	0.4	+68.6	3,816	0.4	3,429	0.3	-10.1	3,235	0.4	-5.7
	Mandolin	861	0.1	562	0.1	-34.7	742	0.1	659	0.1	-11.2	584	0.1	-11.4
	Other plucked instruments	1,950	0.3	2,365	0.3	+21.3	2,519	0.3	3,829	0.4	+52.0	3,342	0.4	-12.7
Drums and other percussions	26,383	4.3	42,644	5.5	+61.6	51,768	5.4	53,642	5.3	+3.6	50,129	5.5	-6.5	
Other instruments	6,487	1.0	3,114	0.4	-52.0	-	-	-	-	-	-	-	-	
Singing and other vocal subjects <sup>6</sup>	17,626	2.8	25,929	3.3	+47.1	33,674	3.5	37,673	3.7	+11.9	33,565	3.7	-10.9	
Other subjects (CMM = classroom music-making)	Instrument merry-go-rounds	-	-	14,464	1.9	-	27,869	2.9	28,650	2.8	+2.8	23,834	2.6	-16.8
	CMM with woodwind instruments	-	-	24,960	3.2	-	36,910	3.9	52,834	5.3	+43.1	45,202	5.0	-14.4
	CMM with string instruments	-	-	8,367	1.1	-	12,477	1.3	16,363	1.6	+31.1	15,988	1.8	-2.3
	CMM with choral classes	-	-	5,776	0.7	-	9,873	1.0	24,296	2.4	+146.1	21,130	2.3	-13.0
	CMM with keyboard instruments	-	-	-	-	-	1,352	0.1	1,833	0.2	+35.6	1,411	0.2	-23.0
	CMM with plucked instruments	-	-	-	-	-	6,077	0.6	9,566	1.0	+57.4	9,452	1.0	-1.2
	CMM with percussions	-	-	-	-	-	6,033	0.6	14,034	1.4	+132.6	13,730	1.5	-2.2
	Elementary music classes	-	-	-	-	-	27,568	2.9	56,983	5.7	+106.7	49,205	5.4	-13.6
	Band classes	-	-	2,667	0.3	-	3,895	0.4	6,632	0.7	+70.3	5,490	0.6	-17.2
	Others	-	-	76,112	9.8	-	43,207	4.5	39,206	3.9	-9.3	25,800	2.8	-34.2
<b>Total enrolment<sup>2</sup></b>		<b>621,251</b>	<b>100</b>	<b>774,399</b>	<b>100</b>	<b>+24.7</b>	<b>951,682</b>	<b>100</b>	<b>1,006,262</b>	<b>100</b>	<b>+5.7</b>	<b>909,163</b>	<b>100</b>	<b>-9.6</b>

NOTE

The data is based on an annual full survey of the Association of German Music Schools (VdM) among its member schools; most recently these were 934 public music schools. This chart shows the number of students in instrumental and vocal subjects (without ensemble or supplementary subjects). Figures up to and including the year 2013 are taken from 1 January of the year concerned; those after 2014 are based on a full calendar year (1 January to 31 December of the preceding year). This change of methodology has a significant impact on the number of students, for the later figures also include pupils enrolled in projects or other courses of limited duration as well as those who dropped out during the year and were thus previously excluded from statistics based on the 1 January reference day.

FOOTNOTES

- <sup>1</sup> The data reflect number of student enrolments of the previous calendar year 2021.
- <sup>2</sup> The total number of students differs from that given in statistic 'Age distribution at public music schools in the Association of German Music Schools (VdM)', since the present chart excludes pupils enrolled in ensemble and supplementary courses.
- <sup>3</sup> As of 2014, a new methodology of data collection has been applied. See note.
- <sup>4</sup> Number of VdM member music schools on 1 January of the subsequent year.
- <sup>5</sup> As of 2015, including baritone horn.
- <sup>6</sup> As of 2010, including voice training.

QUELLENINFORMATIONEN

Compiled and calculated by the German Music Information Centre from *VdM-Jahresbericht 2022*, ed. Association of German Music Schools (VdM), 2023, and various issues of *Statistisches Jahrbuch der Musikschulen in Deutschland*, published annually by the VdM.

Do you have questions or are you  
looking for something specific?

[miz.org/en/musical-life/statistics](https://miz.org/en/musical-life/statistics)  
[info@miz.org](mailto:info@miz.org)

THE MIZ IS A FACILITY OF

 **DEUTSCHER  
MUSIKRAT**

**Deutscher Musikrat gGmbH**  
**Deutsches Musikinformationszentrum (miz)**  
Weberstraße 59, 53113 Bonn, Germany  
+49 (0)228 2091-180  
[info@miz.org](mailto:info@miz.org)  
[www.miz.org](http://www.miz.org)

Managing Director Deutscher Musikrat gGmbH:  
Stefan Piendl  
Director German Music Information Centre:  
Stephan Schulmeister