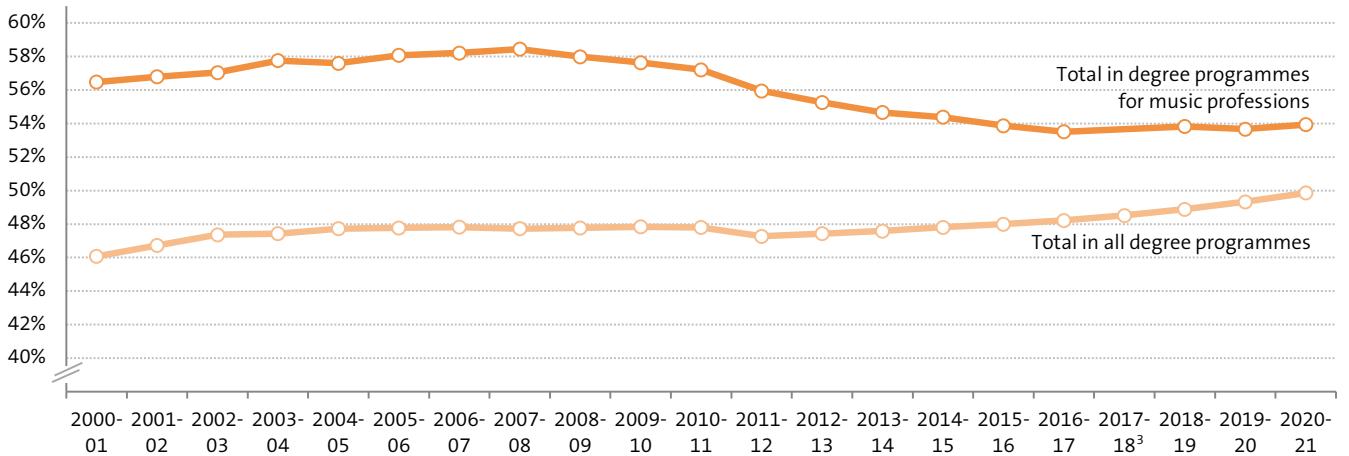
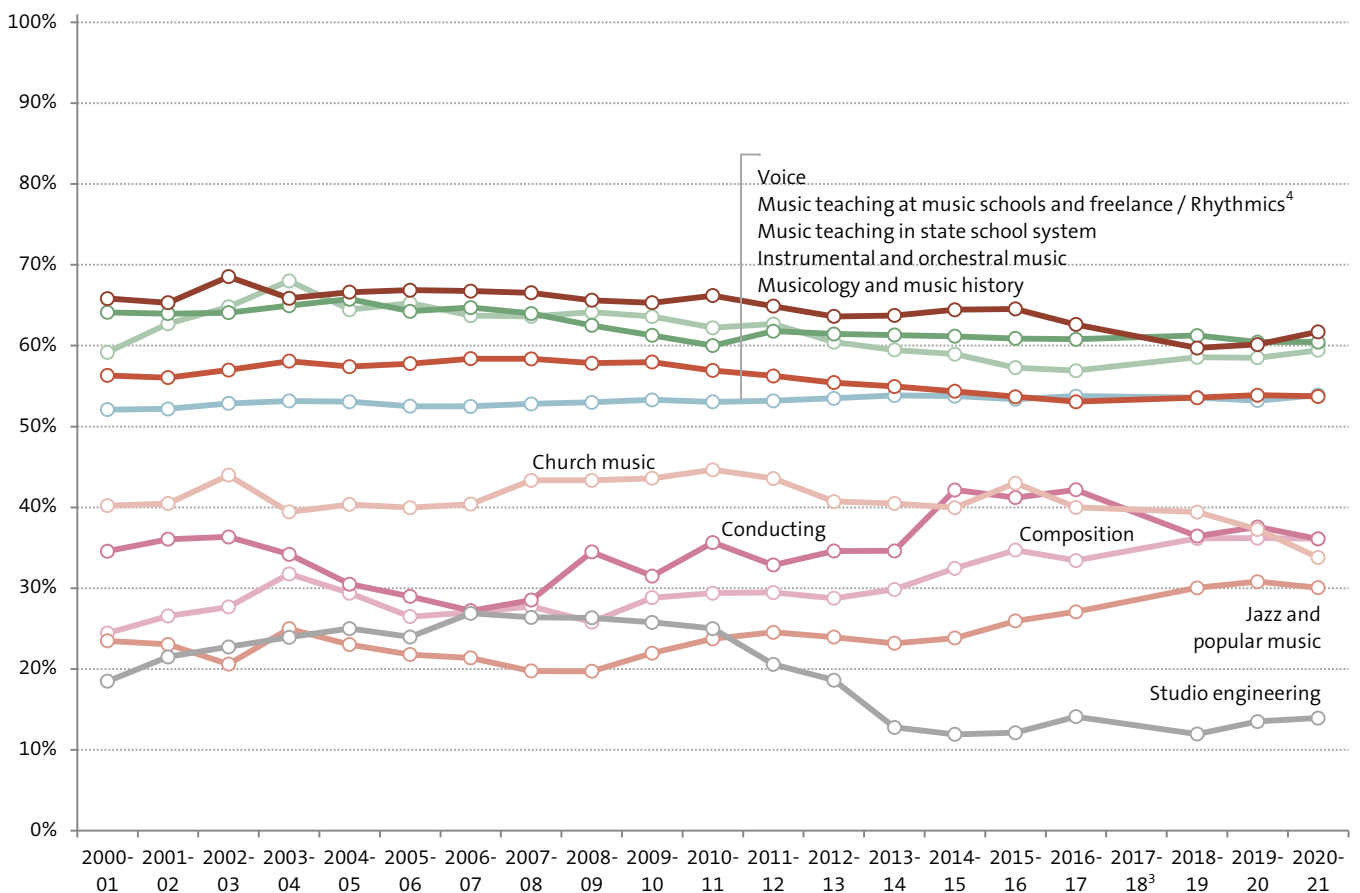


» Percentage of female, male and foreign students in degree programmes for music professions at tertiary-level music schools,¹ universities,² teacher training colleges and polytechnics

Percentage of female students in Germany



Percentage of female students in degree programmes for music professions



» **Percentage of female, male and foreign students in degree programmes for music professions**
at tertiary-level music schools,¹ universities,² teacher training colleges and polytechnics

Degree programme	Total number of students ⁵ in WS 2020-21	Female students		Male students		Students with foreign citizenship					
		All		All		All		Female		Male	
		Total	%	Total	%	Total	%	Total	Share of all foreign students (%)	Total	Share of all foreign students (%)
Music teaching at music schools and freelance	4,188	2,483	59.3	1,705	40.7	805	19.2	536	66.6	269	33.4
Rhythmics	18	17	94.4	1	5.6	3	16.7	3	100.0	0	0.0
Music teaching in state school system	7,967	4,816	60.4	3,151	39.6	209	2.6	137	65.6	72	34.4
Musicology and music history	6,734	3,629	53.9	3,105	46.1	926	13.8	598	64.6	328	35.4
Composition	457	165	36.1	292	63.9	275	60.2	115	41.8	160	58.2
Conducting	327	118	36.1	209	63.9	172	52.6	67	39.0	105	61.0
Instrumental and orchestral music	9,522	5,116	53.7	4,406	46.3	5,899	62.0	3,270	55.4	2,629	44.6
Voice	1,698	1,048	61.7	650	38.3	721	42.5	428	59.4	293	40.6
Jazz and popular music ⁶	1,694	509	30.0	1,185	70.0	252	14.9	70	27.8	182	72.2
Church music	521	176	33.8	345	66.2	91	17.5	46	50.5	45	49.5
Studio engineering ⁷	524	73	13.9	451	86.1	78	14.9	15	19.2	63	80.8
Grand total⁸	33,650	18,150	53.9	15,500	46.1	9,431	28.0	5,285	56.0	4,146	44.0

For comparison purposes

Total in all degree programmes at tertiary-level schools in WS 2020-21	2,944,145	1,467,779	49.9	1,476,366	50.1	416,437	14.1	193,470	46.5	222,967	53.5
--	-----------	-----------	------	-----------	------	---------	------	---------	------	---------	------

Total in degree programmes for music professions in WS 2000-01	31.537	17.810	56.5	13.727	43.5	6.031	19.1	n/a	n/a	n/a	n/a
Total in all degree programmes in WS 2000-01	1.799.338	829.201	46.1	970.137	53.9	187.027	10.4	87.121	46.6	99.906	53.4

Note: The figures are based on administrative data on first-time enrolment and returnees, obtained and submitted to the state statistical offices by the schools concerned and from thence to the Federal Statistical Office. The table includes the total number of students, i.e. those with music as a major or minor subject. All figures refer to the winter semester (WS) and include all students enrolled in music programmes, i.e. excluding those on leave, preparatory students and auditors. When interpreting the data, it should be borne in mind that the state statistical offices sometimes use conflicting classification systems for school subjects, which can lead to anomalies in the series of figures. Similarly, the inclusion of music as a major and minor subject may cause students to be counted more than once. As a result, the figures at best represent orders of magnitude.

With regard to gender data, four attributes are considered: 'male', 'female', 'diverse' and 'not specified'. For reasons of privacy protection, the Federal Statistical Office assigns 'diverse' and 'not specified' to the categories 'male' and 'female' in its publications. This allocation is randomised (no proportional quota sampling, with an expected value of 0.5). The numbers of female and male students thus include approximately equal proportions of students with non-binary gender identity. The ratios of male and female students are only minimally affected by this procedure.

¹ Incl. students at the tertiary-level schools of church music in Aachen (WS 2001-02 to WS 2006-07), Görlitz (up to WS 2007-08) and Regensburg (from WS 2002-03) as well as Bayreuth, Dresden, Halle, Herford and, since WS 2016-17, the Barenboim-Said Academy in Berlin.

² Incl. *Gesamthochschulen* ('comprehensive universities' i.e. university cum technical university) until WS 2001-02.

³ Figures for WS 2017-18 could not be taken into account, since at least one school submitted faulty administrative data that led to considerable distortions in the numbers of students in certain subjects at the national level.

⁴ The graph shows the total share of female students in both degree programmes music teaching at music schools and freelance, and rhythmics.

⁵ Excl. students in departments of performing arts, film, television and theatre studies (incl. set design, stage direction etc.).

⁶ Excl. students at *Popakademie* Baden-Württemberg which is not covered by the Federal Statistical Office.

» **Percentage of female, male and foreign students in degree programmes for music professions**
at tertiary-level music schools,¹ universities,² teacher training colleges and polytechnics

⁷Incl. course offerings in studio engineering at the *Musikhochschulen* in Berlin (UdK) and Detmold, as well as the bachelor's programme in music production and audio design at SRH Berlin School of Popular Arts (from WS 2010-11), the bachelor's programme in 'Sound and Music Production' at Darmstadt *Hochschule* (from WS 2013-14), and course offerings of the Dortmund University of Applied Sciences and Arts (from WS 2016-17) and the *Robert Schumann Hochschule* Düsseldorf (from WS 2018-19).

⁸Plus students at several music academies, conservatories, private colleges, polytechnics and tertiary-level schools of church music, which are not covered by the Federal Statistical Office at all (the most recent figures amounted to approx. 1,300 students in eleven such institutions in WS 2013-14). Also not included are those students whose degree programmes for music professions are not classified as belonging to the field of music/musicology according to federal classification guidelines.

Source: Compiled and calculated by the German Music Information Centre from figures supplied by the Federal Statistical Office.